

INTELLIGENCE INSIDER

Your Oxford Health Libraries' monthly newsletter

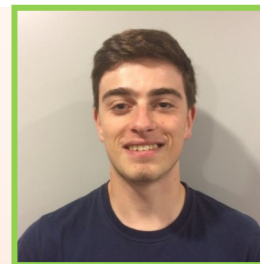
In this issue:

- ◆ MKUH visit
- ◆ CAT Group
- ◆ Google Scholar bits
- ◆ One Library Drop-in to go
- ◆ Library Self Service

Shared Chapters at MKUH

We recently visited Milton Keynes University Hospital Library (MKUH). The visit was an opportunity to observe firsthand how another library operates within a hospital environment and to exchange ideas with colleagues there.

What stood out immediately was the warm welcome and the collaborative spirit among the staff. We had the chance to compare the different roles that libraries like ours share. While the structure of responsibilities was similar, with key roles in user support, resource management, and digital services, the nuances in how each team approaches their work opened some interesting conversations.



Tom Rogers

Senior Assistant Librarian

For instance, MKUH has been placing particular emphasis on helping users complete their mandatory e-learning. Their library team has implemented a hands-on support system, where staff are actively involved in guiding users through the technical aspects of e-learning modules. This includes offering dedicated drop-in sessions and one-on-one assistance to troubleshoot any issues users may face when navigating the e-learning platforms. MKUH also uses self-service machines, something which has just been implemented in our libraries also!

In return, they were keen to learn about ward rounds undertaken by the outreach librarians; as well as our wellbeing events, particularly the book clubs we are running/helping to run. These types of initiatives help us extend our library services to a wider range of hospital staff and departments.

Ultimately, the visit was a great reminder of the shared goals that unite library professionals, even in different settings, and how important it is to continuously learn from one another.



Lucy Speakman,
Respiratory Support Nurse

The benefit of a CAT Group

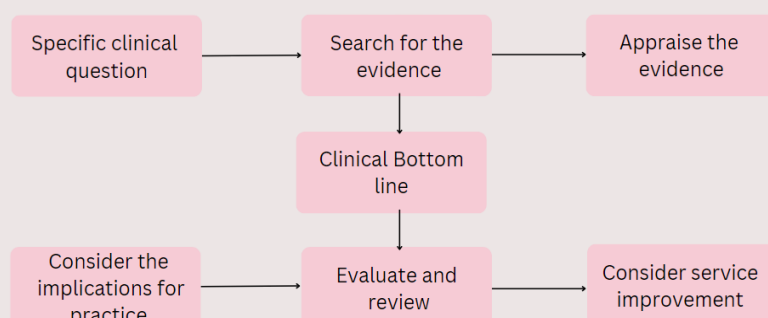
I am a Community Respiratory Nurse working within the Community, Dentistry and Primary Care Directorate. I undertook a Professional Doctorate, sponsored by OHFT at OBU, which I completed last year. I am currently doing a secondment in Research and Development (R&D) to embed the research pillar into clinical practice.

Within this role I am carrying out a number of projects to encourage clinicians to build research into their practice. One of these projects consists in the introduction of [CAT](#) (Clinically Appraised Topics) **Groups** with the support of the library.

A CAT is developed by a group of clinicians who identify a clinical question which is structured and answerable; they then appraise and summarise the best available evidence to provide a "clinical bottom line". CATs can lead to service improvement, cost savings, staff development, research engagement and research confidence.

The librarians support the CAT Group to formulate their clinical question, then search for relevant literature; they also teach the group appraisal skills so their evidence can be assessed, thus arriving at a clinical bottom line. We are keen to support CAT Groups in R&D: we are running a CAT Group Forum every 6 weeks for anyone who is part of a group, is thinking of setting up one or just wants to know more about it.

The next meeting is **Mon 16th Dec 12-13.00**. Please email the [library](#) or [Lucy](#) to find out more.




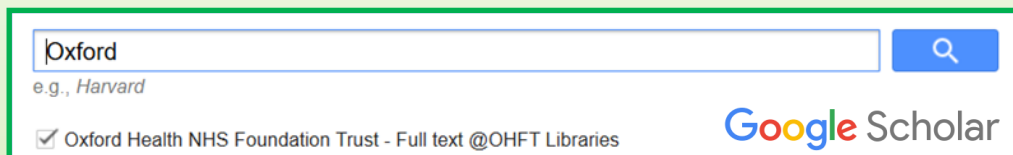


Katie Treherne,
Outreach Librarian

Oxford Health on Google Scholar

Did you know that you can find and access the full text of journal articles covered by Oxford Health subscriptions through Google Scholar, using your NHS Athens account?

- ◆ To set this up on [Google Scholar](#) go to the  **Menu** in the top left, select **Settings, Library Links**.
- ◆ Search for **Oxford** in the **search box** then tick the option for Oxford Health NHS Foundation Trust.
- ◆ And **save**.



Oxford
e.g., Harvard

☒ Oxford Health NHS Foundation Trust - Full text @OHFT Libraries

Google Scholar

Now, when you run your search, articles which are available through the library will have a note which reads 'Full text @OHFT Libraries'.

Transparency, trust and minimizing burden to increase recruitment and retention in trials: a systematic review

Full text @OHFT Libraries

P Natale, V Saglimbene, M Ruospo... - Journal of Clinical ..., 2021 - Elsevier
... reflected **barriers**: ambiguity of context and benefit – **patients** ... of language **barriers**; wary of added burden – **patients** were ... skepticism, fear and mistrust – **patients** feared loss of privacy, ...
☆ Save ⓘ Cite Cited by 44 Related articles All 9 versions

Click on [Full text @OHFT Libraries](#) and enter your NHS Athens credential to access.

Library drop-in

Last library drop-in session at Unipart before the Christmas break!
Julia will be there to help you with any library-related enquiries: how to access books, articles, library resources and more.
Friday 6th December 12.30-13.30 at Unipart, 4th floor.



BMJ Best Practice app
Confidence when it counts

You can now use  OpenAthens to log in



Oxford Health
Libraries



New Self Service Machine

Warneford Library

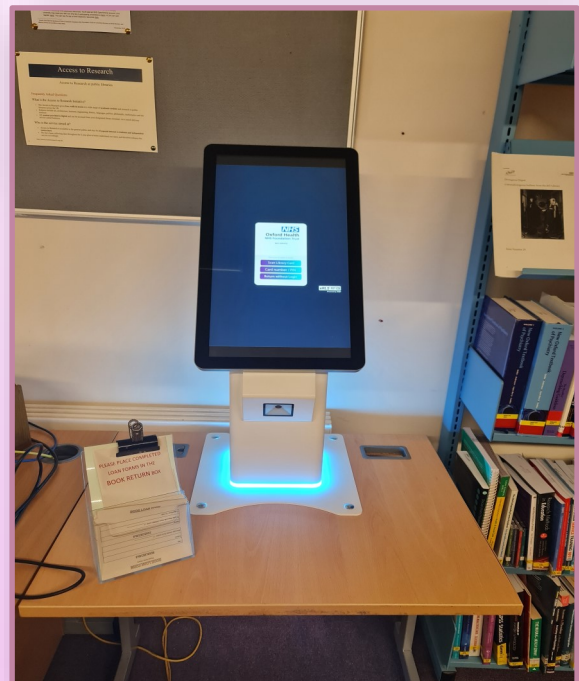


Have you tried our **Self Service** machine yet?

As you know, libraries are open **24/7**, but, sometimes, our staff need a rest!

If we are not around please help yourself!

Littlemore Library





Whiteleaf Library



No instruction needed but for any question or advise please contact us at:

Library.Enquiries@oxfordhealth.nhs.uk

Require an article or a book? Want to learn how to perform a quicker and more effective search on specific topics? Need a literature search for guidelines, case studies, research papers or a quality improvement project? Want to keep up to date with the latest information in your field of interest?

Contact us at library.enquiries@oxfordhealth.nhs.uk Follow us   @OHFTLib

The next edition will be published in December 2024.