

Statement of Purpose

1. Name and Contact Details

Name: Oxford Health NHS Foundation Trust

CQC provider ID: RNU

Chairman: David Walker

Chief Executive: Nick Broughton

Nominated Individual: Marie Crofts, Chief Nurse

Address: Trust Headquarters
Corporate Services
Littlemore Mental Health Centre
Sandford Road
Oxford
OX4 4XN

Business email: contact@oxfordhealth.nhs.uk

Website: <http://www.oxfordhealth.nhs.uk>

Main business telephone: 01865 901 000

Reporting against the following outcomes has been delegated within the Trust as shown below:

Table 1.

Regulation		Information Reported to	Delegated Responsibility
16	Notification of a death of a person who uses services	NRLS automatically	SI Team
17	Notification of death of a person who is detained or liable to be detained under the Mental Health Act 1983	Directly to CQC	Mental Health Act Team
17	Services that are designated as low, medium or high security are required to notify CQC of any unauthorised absence of a person detained or liable to be detained under the Mental Health Act 1983, and of the return of persons from unauthorised absences.	Directly to CQC	Mental Health Act Team
18	Notification when a child or young person under 18 years is placed on a psychiatric ward intended for adults (where placement lasts longer than 48 hours)	Directly to CQC	Mental Health Act Team
18	Deprivations of Liberty	Directly to CQC	Mental Health Act Team
18	Where a detained patient has received treatment under Section 57, Sections 58 or 62A a report on the treatment and the patient's condition must be completed	Directly to CQC	Mental Health Act Team
18	All other incidents (for example serious injuries, serious events that stop services running, allegations of abuse)	NRLS automatically	SI Team

2. Legal Status of Provider

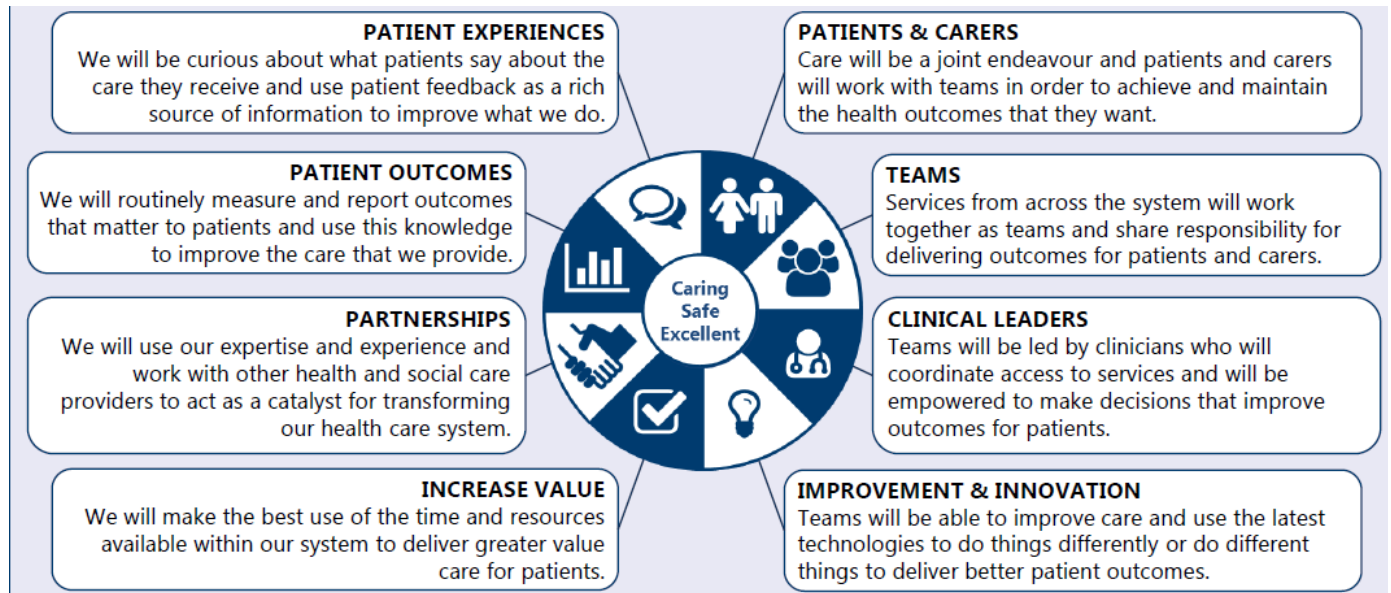
The Trust has been licensed as a Foundation Trust from 1st April 2008, regulated by NHS Improvement (formerly Monitor). Licence number: 110079. Further details can be found at: <https://www.gov.uk/government/groups/oxford-health-nhs-foundation-trust>

3. Aims and Objectives

We are a community-focused organisation that provides physical and mental health services integrated with social care with the aim of improving the health and well-being for the local communities we provide services within. We provide services for children and young people, adults and older people across Oxfordshire and Buckinghamshire, and Child and Adolescent Mental Health services in Swindon, Wiltshire, Bath and North East Somerset.

We are committed to our vision for all the individuals and communities we serve to receive “Outstanding Care Delivered by Outstanding People”. The trust’s values underneath this are caring, safe and excellent.

Our strategy is based around the following elements:



Our priorities are:

- 1 To make care a joint endeavour with patients, families and carers
- 2 To improve the quality of care by transforming services
- 3 To support teams to improve the safety and quality of care they provide
- 4 To support leaders to maintain a positive culture for teams
- 5 To ensure Oxford Health NHS FT is high performing and financially viable
- 6 To lead research and adopt evidence that improves the quality of care
- 7 To embed and enhance the electronic health record

The above is translated into three clinical programmes:

- Mental Health Five Year Forward View
- Care Closer to Home
- New Care Models for Specialised Commissioning

4. Kinds of Service Provided, Range of Service User's Needs that those Services are intended to Meet and Details of Locations Where Services are Delivered

The Trust is registered to provide the following ten regulated activities:

- Treatment of disease, disorder or injury
- Assessment of medical treatment for persons detained under the Mental Health Act 1983
- Nursing Care
- Diagnostic and screening procedures
- Transport services, triage and medical advice provided remotely
- Family planning
- Surgical procedures
- Personal care
- Maternity and midwifery services
- Accommodation for persons who require nursing or personal care

Table 2 below shows by registered location the details of what services are provided, where services are based, the regulated activities provided, and the service user bands.

Table 2.

	Location	Location ID	Address	Services Provided (note bed numbers change over time)	Regulated Activity (CQC definition)									Type of Service (CQC definition)								Service User Band (CQC definition)
					Assessment or medical treatment for persons detained under the Mental Health Act 1983	Treatment of disease, disorder or injury	Nursing Care	Diagnostic and screening procedures	Transport services, triage and medical advice provided remotely	Family Planning	Maternity & midwifery services	Surgical Procedures	Personal Care	Accommodation for persons who require nursing or personal care	Mental health and/or learning disability hospital	Mental health and/or learning disability community service	Prison Health	Substance misuse rehabilitation and/or treatment service	Rehabilitation Services	Community Health care services	Dental Services	
1	Littlemore Health Centre	RNU30	Oxford, Oxfordshire	<p>6 Forensic wards (Women's, Medium secure, low secure and pre-discharge): Glyme, Kennet, Kestrel, Kingfisher, Lambourne and Wenric (94 beds)</p> <p>1 Psychiatric Intensive Care Unit Ashurst (13 beds). Includes 1 place of safety.</p> <p>1 adult acute mental health ward Phoenix (20 beds). Includes 1 place of safety.</p> <p>The assessment hub facility can also be used as another place of safety, although because no staff are based here staffing would be provided from the ward.</p> <p>In total 3 places of safety on site, however there is staffing resource to support 2 places of safety to be in use at any one time.</p> <p>Evenlode learning disability forensic ward (10 beds)</p>	Y	Y																<ul style="list-style-type: none"> Older People Younger Adults Mental Health People detained under the MH Act People who misuse drug and alcohol
2	Warneford Hospital	RNU33	Oxford, Oxfordshire	<p>1 Child and adolescent ward Highfield (20 beds)</p> <p>3 adult wards: Vaughan Thomas, Wintle and Allen (55 beds) including 1 place of safety</p> <p>1 eating disorder unit Cotswold House Warneford (14 beds)</p>	Y	Y																<ul style="list-style-type: none"> Older People Younger Adults Children 0-18 years Mental Health People detained under the MH Act People who misuse drug and alcohol People with an eating disorder
3	The Fulbrook Centre	RNU75	Oxford, Oxfordshire	2 older adult mental health wards; Cherwell and Sandford (34 beds)	Y	Y		Y														<ul style="list-style-type: none"> Older People Younger Adults Mental Health

	Location	Location ID	Address	Services Provided (note bed numbers change over time)	Regulated Activity (CQC definition)									Type of Service (CQC definition)								Service User Band (CQC definition)	
					Assessment or medical treatment for persons detained under the Mental Health Act 1983	Treatment of disease, disorder or injury	Nursing Care	Diagnostic and screening procedures	Transport services, triage and medical advice provided remotely	Family Planning	Maternity & midwifery services	Surgical Procedures	Personal Care	Accommodation for persons who require nursing or personal care	Mental health and/ or learning disability hospital	Mental health and/ or learning disability community service	Prison Health	Substance misuse rehabilitation and/ or treatment service	Rehabilitation Services	Community Health care services	Dental Services		Urgent care services
				1 community hospital City ward; 20 beds																			<ul style="list-style-type: none"> Dementia People detained under the MH Act
4	Cotswold House, Savernake	RNU80	Marlborough, Wiltshire	1 eating disorder unit Cotswold House Savernake (12 beds)	Y	Y																	<ul style="list-style-type: none"> Younger Adults Mental Health People detained under the MH Act People with an eating disorder
5	Marlborough House, Milton Keynes	RNU92	Milton Keynes	2 Forensic wards (Medium secure): Chaffron and Watling (28 beds)	Y	Y																	<ul style="list-style-type: none"> Older People Younger Adults Mental Health People detained under the MH Act People who misuse drug and alcohol People with an eating disorder
6	Buckinghamshire Health and Wellbeing Campus	RNU09	Aylesbury, Buckinghamshire	<p>2 adult acute wards Ruby and Sapphire (40 beds) including 2 places of safety</p> <p>1 older adult acute ward Amber (20 beds) including 1 place of safety.</p> <p>1 adult rehab ward Opal (20 beds). Including 1 place of safety.</p> <p>In total 4 places of safety on site, however there is staffing resource to support 2 places of safety to be in use at any one time.</p> <p>1 Forensic ward (Low secure) Woodlands (20 beds)</p>	Y	Y																	<ul style="list-style-type: none"> Older People Younger Adults Mental Health People detained under the MH Act People who misuse drug and alcohol Children 0-18 years
7	Trust Head Quarters	RNUHQ	Base same as Executive Team. Services delivered across Oxfordshire,	Includes all community services provided both mental health, learning disabilities and primary care community services.	Y	Y	Y	Y	Y			Y	Y										<p><u>Milton Keynes, Oxfordshire, Buckinghamshire, Swindon, Wiltshire, and B&NES:</u></p> <ul style="list-style-type: none"> Older People Younger Adults Children 0-18 years

	Location	Location ID	Address	Services Provided (note bed numbers change over time)	Regulated Activity (CQC definition)										Type of Service (CQC definition)										Service User Band (CQC definition)
					Assessment or medical treatment for persons detained under the Mental Health Act 1983	Treatment of disease, disorder or injury	Nursing Care	Diagnostic and screening procedures	Transport services, triage and medical advice provided remotely	Family Planning	Maternity & midwifery services	Surgical Procedures	Personal Care	Accommodation for persons who require nursing or personal care	Mental health and/ or learning disability hospital	Mental health and/ or learning disability community service	Prison Health	Substance misuse rehabilitation and/ or treatment service	Rehabilitation Services	Community Health care services	Dental Services	Urgent care services	Doctors treatment services	Doctors consultation Services	
			Milton Keynes, Buckinghamshire, Swindon, Wiltshire, and B&NES	<p>Including:</p> <ul style="list-style-type: none"> - Oxfordshire community learning disability services - Complex Needs service - Adult, Older Adult and Children/ Adolescent Community Mental Health Teams in Oxon, Bucks, Swindon, Wiltshire, and BaNES (includes crisis services) - CAMHS learning disability teams - Children's Community Services (non-mental health) in Oxon e.g. health visitors, children's community nursing - Nursing service to 3 colleges of the University of Oxford, plus supervision of a nursing service provided to a further 22 colleges. - District nursing service including end of life care - Dental Service - Community Forensic Service - Community Eating Disorder Service - Psychological Services - Urgent care eg 3 x Minor Injury Units, 2 x first aid units and GP OOH services, 1X RACU (Rapid Access Care Unit) - Medical Liaison Service/ Liaison Psychiatry services provided to acute hospitals - Medical cover to intermediate beds at the Isis care home, Watlington Care home and Brooklands in Banbury. -Flu vaccinations 																		<ul style="list-style-type: none"> • Mental Health • Dementia • People detained under the MH Act • People who misuse drug and alcohol • People with an eating disorder <p><u>Oxfordshire</u></p> <ul style="list-style-type: none"> • Whole Population 			

	Location	Location ID	Address	Services Provided (note bed numbers change over time)	Regulated Activity (CQC definition)													
					Assessment or medical treatment for persons detained under the Mental Health Act 1983	Treatment of disease, disorder or injury	Nursing Care	Diagnostic and screening procedures	Transport services, triage and medical advice provided remotely	Family Planning	Maternity & midwifery services	Surgical Procedures	Personal Care	Accommodation for persons who require nursing or personal care				
				administered at Kassam Stadium (Oxford), during November and December 2020 -COVID-19 vaccinations to be administered at Kassam Stadium (Oxford) from 14/12/2020; Madjeski Stadium (Reading) from 12/02/2021; and, Stoke Mandeville Stadium (Aylesbury) from 26/04/2021.														
8	Marlborough House, Swindon	RNUAL	Swindon, Wiltshire	1 child and adolescent ward Marlborough House Swindon (12 beds)	Y	Y												
9	Abingdon Community Hospital	RNUDQ	Abingdon Oxfordshire	44 inpatient beds in 2 wards includes EMU and specialist stroke ward		Y	Y											
10	Bicester Community Hospital	RNU09	Bicester Oxfordshire	11 inpatient beds in 2 wards		Y	Y											
11	Didcot Community Hospital	RNUCK	Didcot Oxfordshire	16 inpatient beds in a single ward		Y	Y											
13	Wallingford Community Hospital	RNUDK	Wallingford Oxfordshire	22 Inpatient beds in a single ward		Y	Y											
14	Wantage Community Hospital	RNUDK	Wantage Oxfordshire	12 inpatient beds in a single ward TEMPORARILY CLOSED- last updated CQC in Feb 2020.		Y	Y											
15	Witney Community Hospital	RNUDM	Witney Oxfordshire	60 inpatient beds in 2 wards includes EMU and specialist stroke ward		Y	Y											
16	Luther Street	RNUx5	St Aldates, Oxford	Medical centre attends to the needs of the homeless and vulnerable housed.		Y	Y		Y	Y						Y	Y	
17	MIU & RACU-Henley	1-5084891089	York Road, Henley-on-	MIU- All age groups can access treatment by		Y	Y											

	Mental health and/or learning disability hospital	Mental health and/or learning disability community service	Prison Health	Substance misuse rehabilitation and/or treatment service	Rehabilitation Services	Community Health care services	Dental Services	Urgent care services	Doctors treatment services	Doctors consultation Services	Service User Band (CQC definition)
Y											<ul style="list-style-type: none"> Children 0-18 years Mental Health People detained under the MH Act People with an eating disorder
				Y							<ul style="list-style-type: none"> Older People Younger Adults
				Y							<ul style="list-style-type: none"> Older People Younger Adults
				Y							<ul style="list-style-type: none"> Older People Younger Adults
				Y							<ul style="list-style-type: none"> Older People Younger Adults
				Y							<ul style="list-style-type: none"> Adults Young Adults
											<ul style="list-style-type: none"> Adults Young Adults

