

# The Community Voice



Patients, their families, and carers play an important part in the way services are delivered to best meet their needs, and the needs of the local community.



## What is 'The Community Voice'?

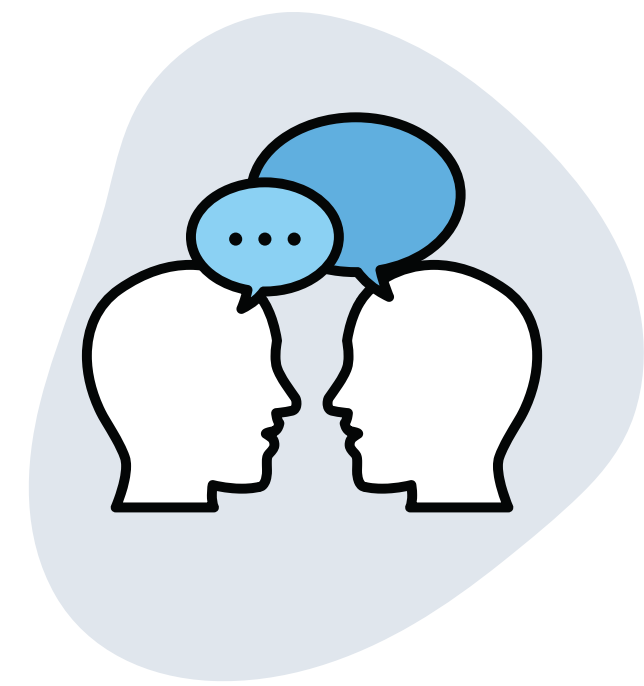
'The Community Voice' is a group of people who have or have had contact with Primary, Community and Dental Services.



## Who can join?

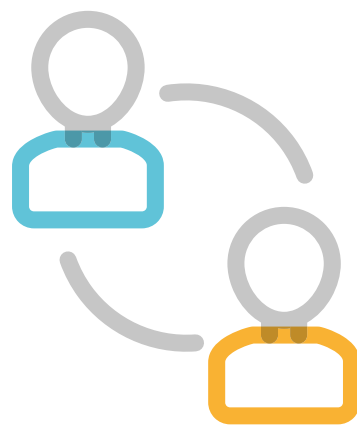
**Anyone** who has been in contact with Oxford Health, Primary, Community and Dental Services.

**Your voice matters!**



## Why should you join?

It is a space for people to come together and for us to learn from people's experiences to make positive changes in your Primary, Community and Dental Services.



## Where does 'The Community Voice' meet?

'The Community Voice' meets bi-monthly on Microsoft Teams.

The meeting usually lasts an hour and a half.

If you're nervous about coming alone, why not ask a friend or family member to come with you?



If you are interested in getting involved, please contact via email: [communityservicesfeedback@oxfordhealth.nhs.uk](mailto:communityservicesfeedback@oxfordhealth.nhs.uk)