

Early Years services in Oxfordshire such as health visitors, early years workers and your child's setting work together to ensure better access for those who need it. Working together means early years services, families and communities will ensure children have the best possible start in life and are 'school ready'. You and your child will also feel supported and empowered by receiving the right support at the right time.



Where can I find more?

Should you require any support please contact your health visitor by using the Chat Health Visiting message service: ParentLine text 0-4 years: 07312 263081 or contact your child's school, setting or childminder.

All agencies that work with children, young people and families are responsible for listening to your concerns and worries and working closely with you to make sure you and your family get the right support at the right time. At times children and families need a bit of extra support – and when that happens, it's ok to ask for help.

Early help is there to make sure worries don't become bigger and you and your child get the support you need at the right time. For more information please visit:



[Early help assessment information for parents and families](#)

Thrive in the Early Years



Supporting your child's attendance and punctuality

What is School Readiness

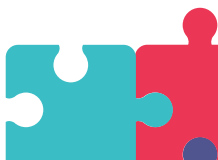
School readiness is a set of skills and behaviours that children have developed by the time they go to school. This allows them to adjust well to school and to benefit from the learning experiences they have there. School readiness supports all children to thrive in the early years from birth to the age of five. This helps them to reach their full potential so they can make the most from everyday life and their statutory education.





How your child benefits from education

- It prepares children for school life.
- It promotes social and emotional development.
- It helps children begin to become independent learners.
- Children learn to take care of themselves and others.
- It promotes language and cognitive skills.
- It nurtures a child's curiosity.
- It boosts pre- maths and literacy skills.
- It helps develop their physical skills.
- Early education most importantly is fun.



Did you know

- Absence disrupts a child's learning and development
- Children who do not attend regularly find it difficult to make and maintain friendships



Research

Research shows that children with poor attendance are at a disadvantage in later life:

- They are less likely to do well at school and gain qualifications
- Have a higher chance of being unemployed or earning low wages

It is notable, that in the year, if your child misses:

- 3 hours a week they lose 114 learning hours
- 6 hours a week they lose 228 learning hours
- 9 hours a week they lose 342 learning hours
- 12 hours a week they lose 456 learning hours



Helpful tips for supporting good attendance and punctuality

- Set a regular bedtime and morning/afternoon routine
- Lay out clothes and organise school/ nursery bag the night before
- Develop back up plans for getting to your setting if something comes up.
- Call on a family member or another parent
- Talk to your setting if you are struggling
- If your child is going to be late or absent always contact your setting on the day
- Don't forget to let your setting know if you change your mobile number

