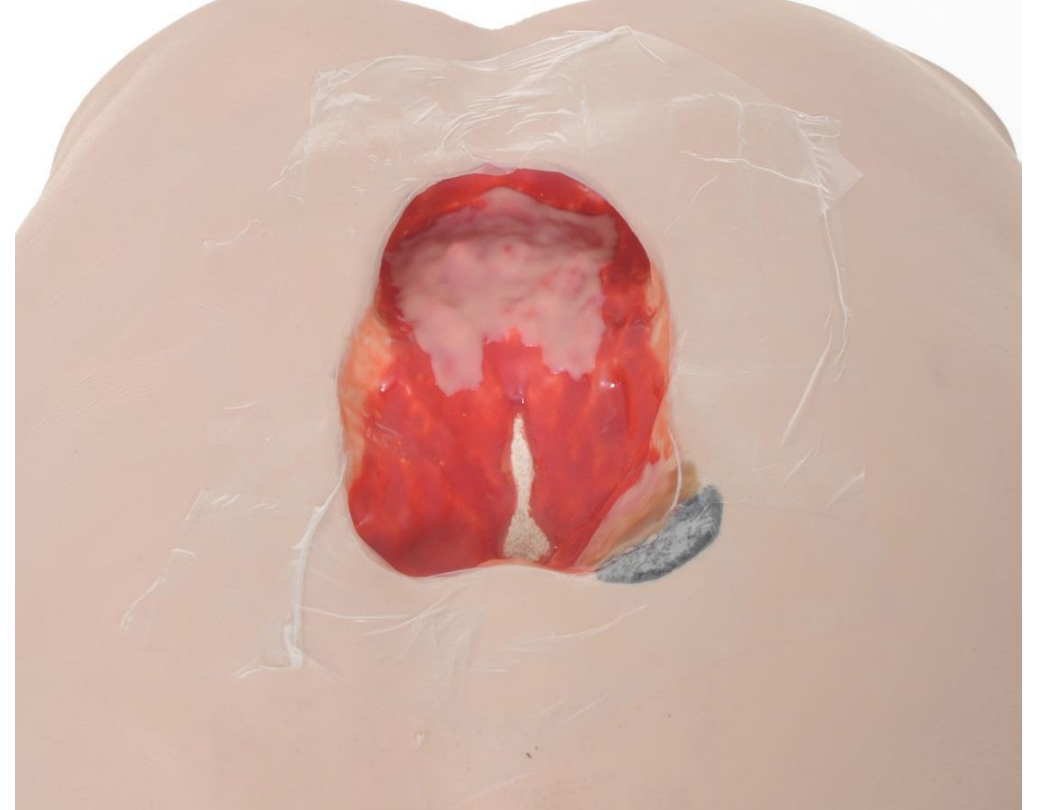


# Protecting the Peri Wound

- In addition to the basic application instructions, we advise using drape to protect the peri wound whenever applying NPWT.
- Cut strips of drape (approx. 2-3cm wide) and 'picture frame' around the wound edge to protect the peri wound from the foam and NPWT.
- See next slide for pictures demonstrating 'picture framing'



# Protect any exposed structures if required

- A liner, such as Activheal Silicone Wound Contact Layer, should be used to protect the following structures if exposed in the wound bed:
  - Bone
  - Tendon
  - Blood vessels
- A liner may slow the rate of granulation so should only be applied over the area of exposed structures.

